

## Safe and effective treatments



Courtesy of Pia Forstlund –  
Stockholmskliniken

**Hair reduction** - Before and after 1 treatments



Courtesy of Pia Forstlund –  
Stockholmskliniken

**Hair reduction** - Before and after 1 treatments



Courtesy of Ellipse A/S

**Hair removal on back** - Before and after 5 treatments



See the treatment



### Ellipse A/S

Agern Allé 11  
DK-2970 Hørsholm  
Denmark  
+45 4576 8808

### www.ellipse.com

 [linkedin.com/company/ellipse-as](https://www.linkedin.com/company/ellipse-as)

 [facebook.com/Ellipse.Denmark](https://www.facebook.com/Ellipse.Denmark)

 [youtube.com/ellipsedenmark](https://www.youtube.com/ellipsedenmark)

 [instagram.com/ellipseas\\_denmark/](https://www.instagram.com/ellipseas_denmark/)

Available from:

Ellipse is a producer of light-based solutions for medical and cosmetic conditions. Ellipse has gained the acclaim of doctors and beauticians worldwide for the quality of products and services. © Ellipse A/S. All rights reserved.

1PLH8683-A01

\*Picture in the front page is a simulation



CLINICALLY PROVEN SAFE AND EFFECTIVE



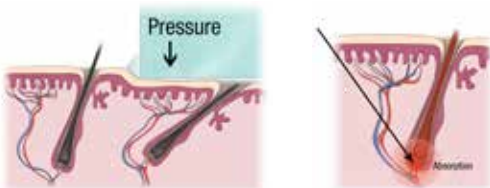
MALE HAIR REMOVAL

# Safe, effective hair removal

**Ellipse uses short, safe bursts of intense pulsed light (called Selective Waveband Technology by Ellipse, but often referred to as a laser) to remove unwanted hair from all body sites in minutes. The results last for years.**

## How does Ellipse treatment work?

A thin layer of gel (similar to ultrasound gel) is applied to your skin before treatment, to ensure the maximum amount of light enters the skin. The Ellipse applicator is pressed against the skin and a carefully controlled pulse of visible light is released. Potentially harmful wavelengths and wavelengths that only heat up water in the skin are removed using patented Ellipse Dual Mode Filtering. The remaining light is absorbed by pigment (melanin) in your hair. Melanin converts the light into heat, which travels down the hair and heats the hair matrix, preventing future hair growth.



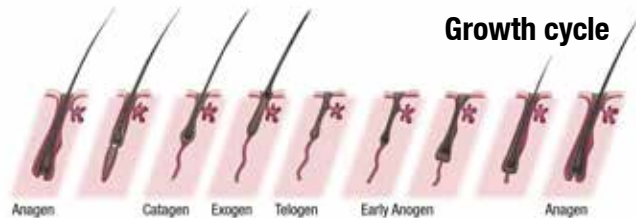
## Can all hairs be treated?

Because the treatment relies on absorption of light by melanin, there needs to be melanin in the hair. This means that light blonde, red, grey or white hairs do not respond, and the most efficient treatment is seen with dark hair. Ellipse is able to treat all colours of skin, and has pre-programmed settings for different hair thicknesses and skin colours to match your exact needs.

## How long does an Ellipse treatment take?

A large number of hairs can be targeted in one flash of light. Treatment of the upper lip takes approximately 1 minute, whereas a back or both legs take 10-20 minutes.

## How many Ellipse treatments do I need?



Every hair has a life cycle; it grows for a period of time, falls out, rests and then starts to grow again. Only hairs that are growing can be treated – so you need to repeat the treatment at intervals until all hair follicles have been treated while growing. The length and timing of the growth cycles are affected by numerous factors such as body site, hormone levels

and age. Clinical studies have shown that typically 3-6 treatments are needed, and the intervals between treatments are typically 1-3 months.

## Do I need to take special precautions before and after treatment?

It is important not to pluck, tweeze, wax or use hair removal creams during the four weeks before treatment. This ensures that as many hair follicles as possible contain a hair which can be destroyed. It is also important to avoid tanning (sun, solarium or self-tanning products) before and during the treatment period. Otherwise your tanned skin will absorb the light instead of your hair. It is also recommended to use sunscreen (min. SPF 30) for four weeks following treatment.

## Does the treatment hurt?

While tolerance of pain is very individual, no anaesthetics are required, and most people describe the sensation as practically pain-free, similar to that of a rubber band snapping onto the skin.

## How can I be sure Ellipse is safe and effective?

Clinical trials documenting Ellipse safety and effectiveness were carried out by leading doctors prior to the release of the treatment, and these were published in respected medical journals. You are welcome to view the scientific papers on the Ellipse website at [www.ellipse.com](http://www.ellipse.com).